

FastMig X

Welding excellence



Energy efficient

- Multi-process power solution: MIG, 1-MIG, pulsed MIG, MMA, and TIG
- Arc Mobile Control brings flexible way to use and control the welding machine
- WiseRoot+ for optimized root welding
- WiseThin + for optimized sheet and position welding: Mixed gas quality with lower cost CO2 shielding gas
- Precise arc voltage function measures and shows the actual arc voltage on the display
- Save time by combining two wire feeders on the same power source for alternative filler wires
- SuperSnake subfeeder connectivity for maximum reach



Intelligent, flexible, upgradable

Kemppi's FastMig X product series offers highly specialized welding solutions and superior welding quality for demanding industrial applications. It features three alternative high-end configuration recommendations for three different purposes: FastMig X Regular for robust workshop use a MIG/MAG pulse welding, mainly for welding thick plates, FastMig X Pipe for pipe and root welding and FastMig X Intelligent for demanding welding applications, for all metals and processes, including welding of thin sheets.

All three configuration options are fully upgradable and can be optimized for specific welding applications by choosing suitable software packages and applications.

All configurations are equipped with either the FastMig X 350 or the FastMig X 450 power source, which is a multi-process CC/CV power source that is ideal for synergic and pulsed MIG/MAG welding, MMA welding, and TIG welding. Used in configuration with WFX wire feeders, they form a welding system that easily meets every welding need and the quality management requirements of any metal fabrication workshop. Additionally, all three configurations come with the Cool X cooling unit.

Applications

- Machine manufacturing
- Transportation
- Oil & gas sector: Offshore and onshore pipelines & rigs
- Power Industry
- Tanks & pressure vessels
- Steel structures

FastMig X series is highly versatile. For example, it enables you to connect two wire feeders, allowing a very rapid change in welding processes, filler wire type, and wire size. The Wise solutions provide further flexibility for specific welding applications: for example, WiseRoot+ meets the special requirements of root welding, and exact arc voltage measurement provides easy and precise control of the device. Arc voltage measurement (available in all FastMig X models) ensures that the set WPS parameters are always kept, regardless of the length of the welding cables. Depending on your needs, you have the option to use and upgrade any of the software packages 1, 2 or 3, each packed with more features and functions.

The system is designed to fulfil the strict demands of the ISO 3834, NORSOK, ASME, and EN 1090 manufacturing standards. Combine your FastMig X welding quality and Kemppi's state-of-the-art quality management solutions to meet the highest welding standards in your production.

Software package 1

Software package 2

Software package 3 & Mobile Control



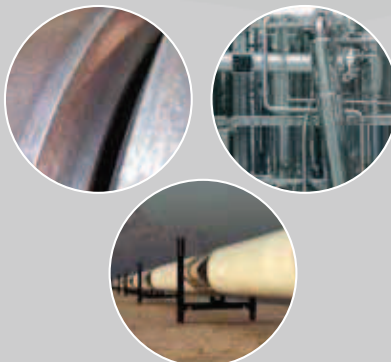
FastMig X **Regular**

- Basic Pulse MIG/MAG welding
- Robust thick metal plates



FastMig X **Pipe**

- Specially designed for pipe welding
- Also suitable for plates, root welding from one side



FastMig X **Intelligent**

- For any metal and process
- Also for thin sheet
- Copy-paste settings from one welding machine to another
- Monitor, control, and adjust welding parameters and settings



FastMig X, WFX 200, 300, -AMC, -P

Ordering information & technical specifications

FastMig X		
FastMig X 450 power source		6103450
FastMig X 450 power source	No control panel	610345001
FastMig X 350 power source		6103350
FastMig X 350 power source	No control panel	610335001
FastMig X 350MV power source		6103353
WFX 200 wire feeder	200 mm	6103520
WFX 300 wire feeder	300 mm	6103530
WFX 200 P Fe wire feeder	200 mm	6103521
WFX 200 P Ss wire feeder	200 mm	6103522
WFX 300 P Fe wire feeder	300 mm	6103531
WFX 300 P Ss steel wire feeder	300 mm	6103532
WFX 200 AMC wire feeder	200 mm	6103523
WFX 300 AMC wire feeder	300 mm	6103533
Software products		
MatchLog function	Included with WFX 200 & 300 AMC	9991017
MatchChannel function	Included with MatchLog licence	
WisePulseMig licence for pulse welding	Included with WFX 200 & 300, -AMC, P Ss	9990417
WiseFusion function	Included with all WFX feeders	9991014
WisePenetration function	Included with WFX 200 & 300 AMC	9991000
Steel welding program package	Included with WFX 200 & 300 P steel	99904274
Stainless steel welding program package	Included with WFX 200 & 300 P stainless	99904275
WiseRoot+ function	Included with WFX 200 & 300 P	9990418
WiseThin+ function	Included with WFX 200 & 300 AMC	9990419
NOTE: WiseRoot+ and WiseThin+ welding processes are not available with SuperSnake sub feeder.		
Accessories		
Cooling unit Cool X		6068200
Arc Mobile Control Adapter	Included with WFX 200 / 300 AMC	6103100
Cabinet heater KWF 200/300		6185288
Magnetic clamp (earth return cable)	600 A	9871570
Magnetic clamp (voltage sensing cable)	200 A	9871580
SuperSnake GT02S sub feeder	10 m	6153100
SuperSnake GT02S sub feeder	15 m	6153150
SuperSnake GT02S sub feeder	20 m	6153200
SuperSnake GT02S sub feeder	25 m	6153250
SuperSnake GT02S W sub feeder	10 m	6154100
SuperSnake GT02S W sub feeder	15 m	6154150
SuperSnake GT02S W sub feeder	20 m	6154200
SuperSnake GT02S W sub feeder	25 m	6154250
SuperSnake GT02S sub feeder synchronization unit for MXF and WFX wire feeders		W004030
KV 200 mounting plate for two wire feeders and TIG unit		6185249
Gun holder GH 30		6256030
Transport unit PM 500		6185291
Software installation device DataGun		6265023

PMT MN guns for Root welding		
1.2 mm / 60° / L198 / Root	3.5 m	62503230N04
1.2 mm / 60° / L168 / Root	3.5 m	62503230N06
1.2 mm / 60° / L198 / Root	5 m	62503250N04
1.0 mm / Stainless / 60° / L198 / Root	5 m	62503250N03SS

– For other models, please contact Kemppi.

Cables		
Earth return cable	5 m, 50 mm ²	6184511
Earth return cable	5 m, 70 mm ²	6184711
MMA welding cable	5 m, 50 mm ²	6184501
MMA welding cable	5 m, 70 mm ²	6184701

Interconnection cables, air-cooled		
FASTMIG X 70-1.8-GH	1.8 m	6260468
FASTMIG X 70-5-GH	5 m	6260469
FASTMIG X 70-10-GH	10 m	6260470
FASTMIG X 70-20-GH	20 m	6260471
FASTMIG X 70-30-GH	30 m	6260472

– For other lengths, please contact Kemppi.

Interconnection cables, liquid-cooled		
FASTMIG X 70-1.8-WH	1.8 m	6260473
FASTMIG X 70-5-WH	5 m	6260474
FASTMIG X 70-10-WH	10 m	6260475
FASTMIG X 70-20-WH	20 m	6260476
FASTMIG X 70-30-WH	30 m	6260477

– For other lengths, please contact Kemppi.

Remote controls		
RMT 10 (PMT)		6185475
Remote control unit R20	5 m	6185419
Remote control unit R30 DataRemote	5 m	6185420
Remote control unit R30 DataRemote	10 m	618542001
Remote control extension cable	10 m	6185481
Remote X 37 control panel		6103800

FastMig X	Regular	Pipe	Intelligent
Power source	FastMig X 350, FastMig X 450	FastMig X 350, FastMig X 450	FastMig X 350, FastMig X 450
Wire feeder	WFX 200	WFX 200 P Fe, WFX 200 P Ss	WFX 200 AMC
	WFX 300	WFX 300 P Fe, WFX 300 P Ss	WFX 300 AMC
Cooling unit	Cool X	Cool X	Cool X
Welding process	MMA	MMA	MMA
	MIG/MAG	MIG/MAG	MIG/MAG
	Syn MIG	Syn MIG	Syn MIG
	Pulse MIG	Pulse MIG (included Pipe stainless pack)	Pulse MIG
	Double Pulse	Double Pulse (included Pipe stainless pack)	Double Pulse
Software	WiseFusion	Wise Fusion	WiseFusion
		WiseRoot+	WisePenetration
		Match Log	WiseThin+
			Match Log
	WorkPack (21 pcs)	Pipe Steel pack Fe (25 pcs)	Steel Pack (14 pcs)
		Pipe Stainless steel pack Ss (17 pcs)	Steel Pack for Wise Thin+ (14 pcs)
			Stainless steel Pack (12 pcs)
			Aluminium Pack (12 pcs)
Mobile Control			Arc Mobile Control

FastMig X, WFX 200, 300, -AMC, -P

Ordering information & technical specifications

FastMig X		350	450	350MV – 230 V range	350MV – 400 V range
Connection voltage	3~50/60 Hz	400 V (-15...+20 %)	400 V, -15...+20 %	220 V -10% ... 230 V +10%	380 V -10% ... 440 V +10%
Rated power	60 % ED		22.1 kVA		
	80 % ED	16.0 kVA		16.0 kVA	16.0 kVA
	100 % ED	15.3 kVA	16.0 kVA	15.3 kVA	15.3 kVA
Output 40 °C	60 % ED		450 A	-	-
	80 % ED	350 A		350 A	350 A
	100 % ED	330 A	350 A	330 A	330 A
Welding current and voltage range	MMA	15 A/20 V – 350 A/46 V	15 A/20 V – 450 A/46 V	15 A/20 V – 350 A/46 V	15 A/20 V – 350 A/46 V
	MIG	20 A/12 V – 350 A/46 V	20 A/12 V – 450 A/46 V	20 A/12 V – 350 A/46 V	20 A/12 V – 350 A/46 V
Max. welding voltage MMA		46 V	46 V	46 V	46 V
Open circuit voltage	MMA	U ₀ = 70 – 98 V, U _{av} = 50 V	U ₀ = 70 – 98 V, U _{av} = 50 V	U ₀ = 70 – 98 V, U _{av} = 50 V	U ₀ = 70 – 98 V, U _{av} = 50 V
	MIG/MAG, Pulse	U ₀ = 80 – 98 V	U ₀ = 80 – 98 V	U ₀ = 80 – 98 V	U ₀ = 80 – 98 V
Open circuit power		100 W	100 W	100 W	100 W
Power factor at max. current		0.85	0.88	0.90	0.88 ... 0.82
Efficiency at max. current		87 %	87 %	83 %	85 %
Operating temperature range		-20...+40 °C	-20...+40 °C	-20...+40 °C	-20...+40 °C
Storage temperature range		-40...+60 °C	-40...+60 °C	-40...+60 °C	-40...+60 °C
EMC class		A	A	A	A
Degree of protection		IP23S	IP23S	IP23S	IP23S
External dimensions	L x W x H	590 x 230 x 430 mm	590 x 230 x 430 mm	590 x 230 x 580 mm	590 x 230 x 580 mm
Weight		38 kg	38 kg	49 kg	49 kg

Suitable for generator use

WFX 300 / 300 AMC

Output 40 °C	60 % ED	520 A
	100 % ED	440 A
Wire feed speed		1 – 25 m/min
Wire feed mechanism		DuraTorque
Diameter of feed rolls		32 mm
Filler wires	∅ Fe, Ss	0.6 – 1.6 mm
	∅ Cored wire	0.8 – 2.0 mm
	∅ Al	0.8 – 2.4 mm
Wire spool	max. weight / max. ∅	20 kg / 300 mm
External dimensions	L x W x H	625 x 243 x 476 mm
Weight		12.5 kg

WFX 200 / 200 AMC / WFX 200 P (Fe and Ss)

Output 40 °C	60 % ED	520 A
	100 % ED	440 A
Wire feed speed		1 – 25 m/min
Wire feed mechanism		4 roll
Diameter of feed rolls		

WFX 300 P (Fe and Ss)

Output 40 °C	60 % ED	520 A
	100 % ED	440 A
Wire feed speed		0.5 – 25 m/min
Wire feed mechanism		GT04
Diameter of feed rolls		32 mm
Filler wires	∅ Fe, Ss	0.6 – 2.0 mm
	∅ Cored wire	0.8 – 2.4 mm
	∅ Al	0.8 – 2.4 mm
Wire spool	max. weight / max. ∅	20 kg / 300 mm
External dimensions	L x W x H	590 x 240 x 445 mm
Weight		13.1 kg

Filler wires	∅ Fe, Ss	0.6 – 1.6 mm
	∅ Cored wire	0.8 – 2.0 mm
	∅ Al	0.8 – 2.4 mm
Wire spool	max. weight / max. ∅	5kg / 200 mm
External dimensions	L x W x H	510 x 200 x 310 mm
Weight		9.4 kg