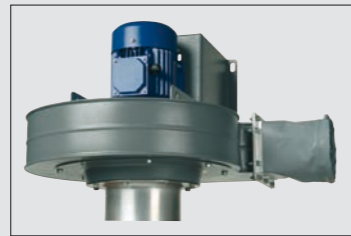




euromate

Euromate completes the package

Euromate offers various solutions against the risks of welding fumes and grinding dust. The modular extraction hood can be connected to fans and central filter systems exclusively supplied by Euromate. These fans and filters will soon solve all your problems connected with welding fumes.



Euromate controls welding fumes

For over 30 years Euromate has been specialising in indoor air cleaning. Industrial pollution and welding fumes are special areas of attention. Being experts in air cleaning, we know about the work, the discomforts and risks welders face on a daily basis. As a result of this we have come up with solutions in accordance with international guidelines. Innovative technology, practical knowledge and years of experience have resulted in a wide range of high-quality air cleaning products for offices, the hotel and catering industry,

medical institutions and the metal industry. In addition to the modular extraction hood, the industrial product range consists of extraction arms, plug & play mobile and stationary units, downdraft tables and general filtration systems.

Euromate BV

Wezelkoog 11

1822 BL Alkmaar - The Netherlands

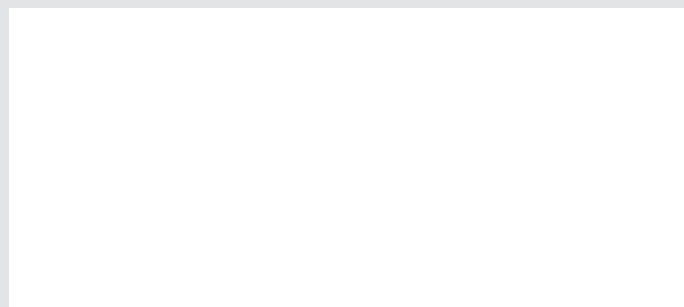
T +31 (0)72 5640 604

F +31 (0)72 5644 469

E info@euromate.nl

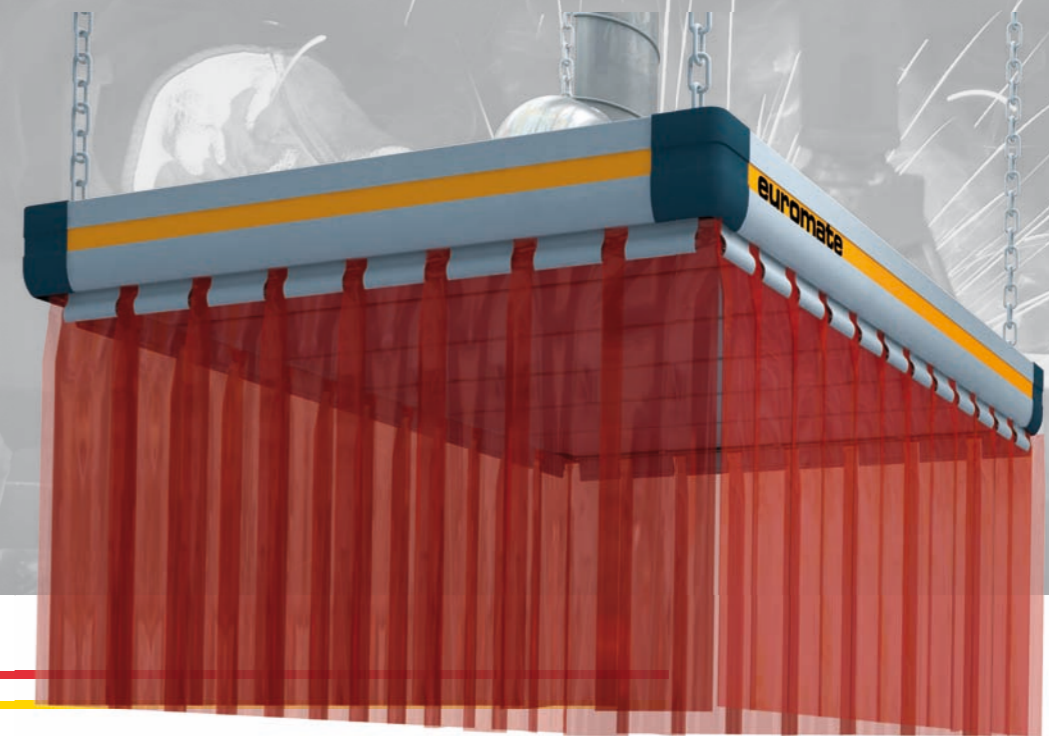
I www.euromate.com

For more information, please contact your authorised Euromate distributor:



0506170020/A

Modular extraction hood: banish welding fumes to the past



Euromate fulfils requests: creating extraction hoods modularly

Welding, cutting, grinding and gouging. All common activities in the metal industry. Welding fumes, small particles, remains of molten metal, sparks and spatter are just a few examples of what welders and personnel in working areas face on a daily basis. It is no surprise then, that personal protection and safety are hot topics in the metal industry.

Euromate, a specialist in innovative solutions for the extraction of welding fumes, has developed a modular extraction hood. This modular concept provides the best answer to all your welding fumes, cutting and gouging issues, where source extraction is impossible.

High-quality extraction and effective filtration systems are required to make sure that legal limits for welding and grinding are not exceeded. And in doing so you are creating a clean and healthy working environment for your employees and yourselves.



MODULAR EXTRACTION HOOD

Breathe free **Breathe Euromate®**



Highly efficient slot extraction, thanks to ingenious airflow system

Protecting yourselves and your employees simultaneously

Proper protection in working areas, where the concentration of welding fumes or grinding dust is too high, can prevent people from getting health complaints. Not providing the proper protection and extraction of fumes and dust will result in a lower productivity due to absences because of illnesses. Creating a clean and healthy working environment will result in satisfied employees – who know they are not putting their health at risk – and increased productivity!

Safety above all

For safety reasons and optimum extraction we highly recommend welding strips. The spark resistant strips are optional and can be used to isolate a working area. The self-extinguishing strips offer protection to the welder and personnel working nearby from the welding light, arc-eye and weld-flash. They offer protection but cannot replace ordinary eye protection or overpressure helmets. Furthermore the welding strips keep other airflows - like draughts – outside the extraction hood and prevent fumes escaping the bounded area – optimising the entire extraction system.

Optimum extraction

Often the extraction of welding fumes in hoods takes place in the middle, not always being very efficient. Some of the fumes will flow out at the sides of the hood – not being extracted at all. Therefore Euromate developed a side extraction framework, optimising the airflow considerably and thus improving the extraction's efficiency.

As extraction takes place from the sides instead of the middle, more fumes are being extracted from the working area – creating a healthier working environment. Thanks to the well thought-out deflector plate, the airflow is controllable and minimises sparks to reach the air-treatment system, decreasing the risk of fire substantially.

Logistical masterpiece

As the extraction hood of Euromate comes in modular parts, the extraction hood can easily be put together on the spot. It's not a do-it-yourself kit, but it is not far of! The extraction hood can be suspended from the ceiling or used as a freestanding unit on aluminium legs – according to the environment you are working in. The legs are optional, available in 2, 2.5 and 3 meters and can be cut to requested lengths. The modular design comes as standard with eye bolts.

Functional design

Robotic welding, cutting, grinding and gouging on benches are just a few examples of situations where extraction hoods are the ideal solution, expelling comprehensive fumes. Euromate offers a modular design from 1.5 m² up to 8 m². Expandable with various accessories, such as a lighting fixture incl. fluorescent lights, aluminium legs and welding strips.

Features

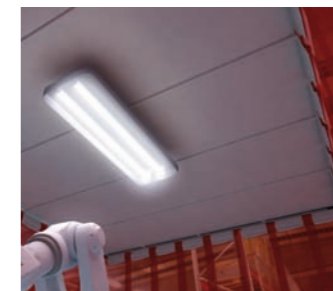
- Easy to maintain, thanks to removable roof
- Modular concept, expandable to your wishes
- Freestanding unit, creatable on the spot
- Efficient extraction, thanks to side extraction
- Well thought-out deflector plate decreases the risk of fire



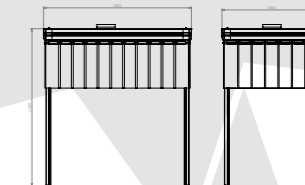
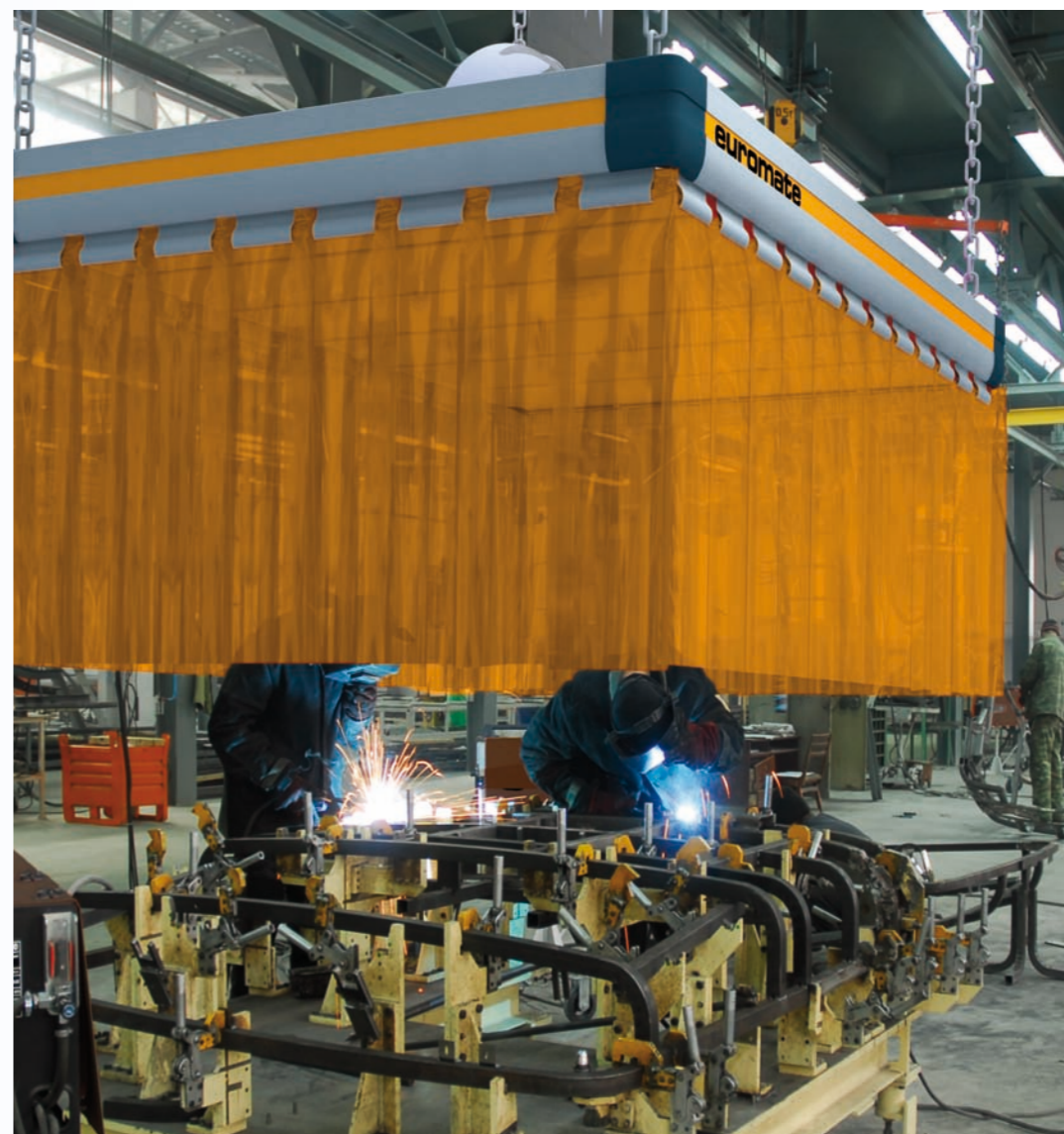
Welding strips



Aluminium legs incl. mounting plates



Lighting fixture incl. fluorescent lights



Technical specifications

- Standard hood size: 1.5 m² to 8 m²
- Dimensions (W): 1 m (3 ft) to 2 m (6 ft) - steps of 50 cm (20 inch)
- Dimensions (L): 1.5 m (5 ft) to 4 m (12 ft) - steps of 50 cm (20 inch)
- Other sizes available on request
- Main material of construction:
 - side profiles: aluminium
 - corner pieces: steel with plastic cover
 - legs: aluminium with steel mounting plates
 - roof and deflector plates: resin filled aluminium sandwich plate
 - welding strips: thermo plastic
- Weight (without options):
 - 1 x 1.5 m (3 x 5 ft): 53 kg (117 lbs)
 - 2 x 2 m (6 x 6 ft): 92 kg (203 lbs)
 - 2 x 4 m (6 x 12 ft): 152 kg (335 lbs)
- Mounting:
 - hanging: on 4 eye bolts (as standard)
 - standing: on legs (optional)
- Recommended extraction capacity: 500-800 m³/h per m² (27-44 CFM per ft²) of hood
- Pressure loss over hood:
 - max. 250 Pa



Easy to maintain

One of the main features of the modular extraction hood is that its really easy to maintain thanks to the modular components, such as the removable roof.

Expandable to your wishes

Due to the increasing demand for easy to maintain extraction

hoods, Euromate has developed a modular extraction hood - extendable and expandable to your wishes.

Not only can you choose your own size, the extraction hood of Euromate can also be expanded with the following accessories.

Accessories

- Welding strips, available in:
 - clear; transparent
 - yellow-orange; transparent
 - orange-red; semi-transparent
 - dark green; non-transparent
- Lighting fixture incl. fluorescent lights
- Aluminium legs incl. mounting plates